

Pre-enrol your child

For the 2022–23 school year

Whether your child is enrolling at the same school or changing schools, all students need to pre-enrol. Knowing how many students to expect helps schools prepare for September.



Your options

Select your child's designated school

Every home address has a designated public school, but it isn't always the one closest to where you live. Visit epsb.ca/fast and talk to your child's school to find your designated elementary, junior high or high school.



Choose to continue at the same school

If your child is continuing at the same school or program, you still need to pre-enrol.



Select any other Division school

The school must have available space, and your child must meet the school's entrance criteria (if applicable).

 **Online learning** – If you want your child to learn online, pre-enrol at *Argyll Centre*.



Sign in to SchoolZone by April 14

What to do	How	When
Visit schoolzone.epsb.ca to sign in to your parent account.	→ Choose <i>Next Year</i> and select the name of the child you are pre-enrolling. Follow the instructions to complete pre-enrolment.	Pre-enrol between 9 a.m. on March 8 and 4 p.m. on April 14, 2022.



Course selection is NOT part of selecting your preferred school in SchoolZone.

Junior high and high school students will choose specific courses (e.g., fine arts, career and technology studies) through a separate process at their current school.

Registering new students

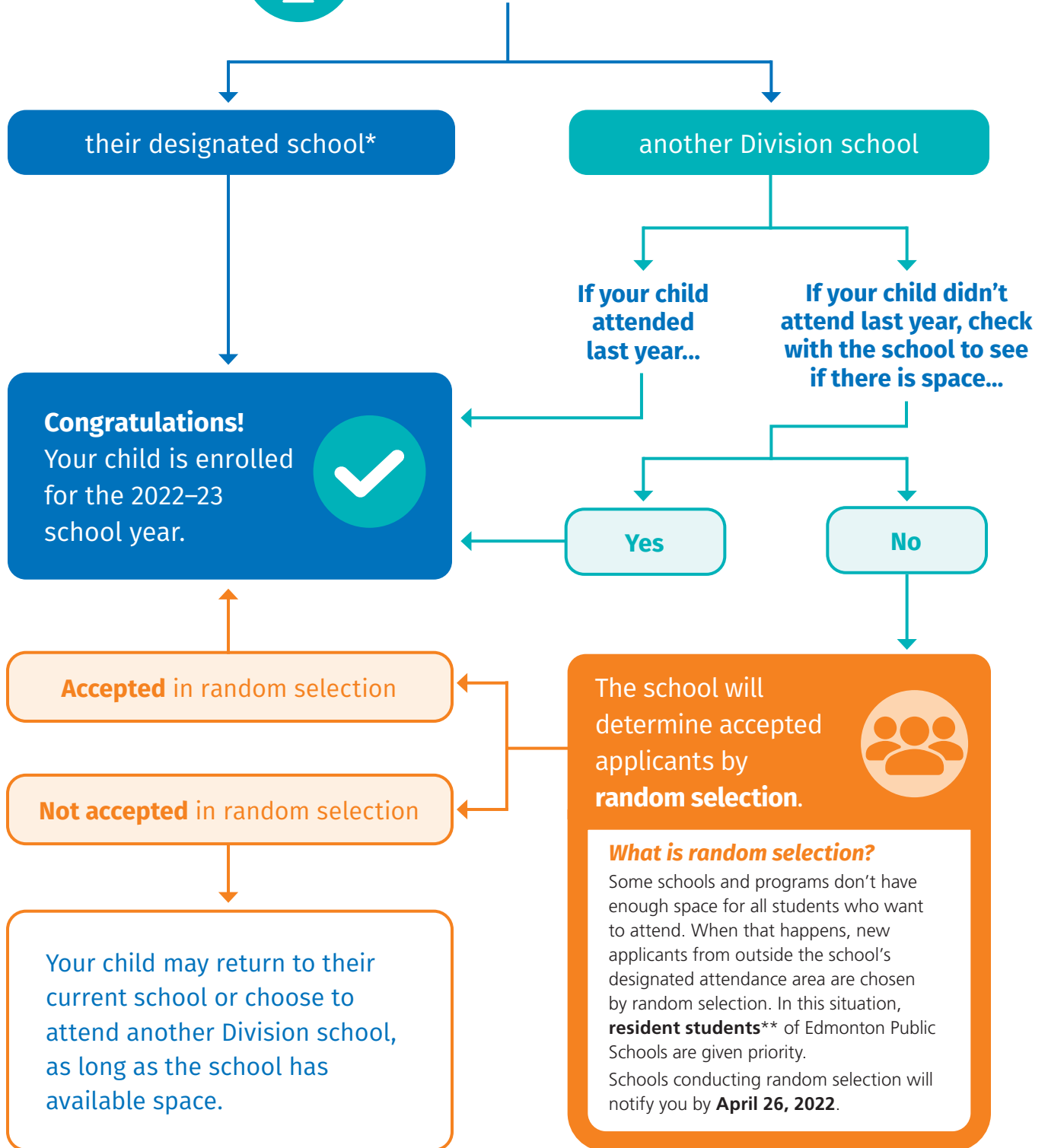
Students who are **new to Edmonton Public Schools** need to submit a completed student registration.

Find the form and a list of documents we need to confirm your address and your child's legal name at epsb.ca/schools/register/newstudentregistration.

What happens after pre-enrolment?



Using SchoolZone,
you pre-enrolled your child at:



*Resident students can attend their designated school if they register or pre-enrol no later than April 14, 2022. However, if their designated school uses a lottery process, some students may not be able to attend that school. Learn more at epsb.ca/lotteryprocess.

**A resident student has at least one parent or legal guardian living in Edmonton who is not Roman Catholic.